

Toad Edge®

Simplify database development for PostgreSQL, Amazon Redshift and MySQL.

Open-source database management systems (OSDBMSs) are becoming more and more popular for business-critical applications. According to *Forbes*, the OSDBMS market is worth \$562 million and has grown 31 percent year over year since 2013. The article predicts that the entire definition of the database management system market will shift from commercial, closed-source DBMSs to OSDBMSs.

These platforms offer cost efficiency, deep functionality, high quality, excellent reliability and, best of all, greater flexibility for development teams. But if you're like other developers and database administrators, you've got questions about moving to a new platform. What tool will my developers use? How will an open-source platform perform? Will it be easy to manage?

The Toad Edge® database development toolset represents the next generation

of Toad® tooling — lightweight, flexible and extensible — simplifying development and administration for MySQL and Postgres. Whether you run your databases on-premises or in the cloud, and use Windows or MacOS X desktops, the short learning curve of Toad Edge allows you to ramp up your Postgres, Amazon Redshift and MySQL expertise quickly using the intuitive Toad interface. What's more, Toad Edge works with DevOps workflows, providing a Jenkins plug-in supporting continuous database integration. Toad Edge supports your organization's commitment to open-source RDBMS with a proven commercial toolset to help deliver quicker time to value.

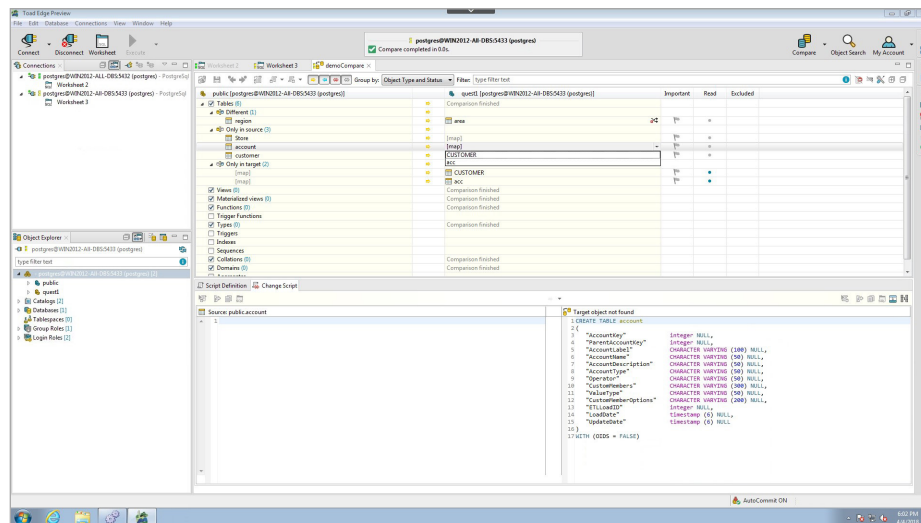
Using the Toad Edge interface, you can easily connect to MySQL, Amazon Redshift or Postgres to:

- View, explore and edit your database schema, objects and properties.

You need a lightweight, dependable interface for your open source databases. Toad Edge is the answer. It's the next-gen toolset that helps simplify PostgreSQL, Amazon Redshift and MySQL development and administration.

BENEFITS:

- Simplifies OSDBMS databases
- Shortens the learning curve by providing a lightweight, easy-to-use and intuitive IDE
- Offers OS flexibility by providing a desktop toolset that runs on Windows and Mac OS X
- Provides greater platform choice with less risk
- Helps ensure code quality and maintainability
- Supports DevOps workflows with a Jenkins continuous integration plug-in



Schema compare dynamically compares and synchronizes databases.

Spend less time and effort developing and maintaining your databases with automated processes and reduced risk.

SYSTEM REQUIREMENTS

Please visit the Quest website for Hardware and Operating Systems requirements: <https://www.quest.com/products/toad-edge/>

- View and manage your database users and privileges.
- Write complex SQL code comfortably in a SQL worksheet.
- Compare and synchronize databases using schema compare.
- Synchronize to your file systems to make it easy to work with your version control.
- Work more easily with JSON data types using the JSON editor.
- View running SQL and other attributes with the session browser.

You'll spend less time and effort developing, managing and maintaining your database environment with simplified, automated processes and reduced risk that's often associated with database changes.

FEATURES

Easy to implement

Offers an easy-to-use Toad interface, shortening your learning curve and reducing risk.

OS flexibility

Supports both Windows and Mac operating systems, giving you greater choice.

Database and cloud flexibility

Expands database possibilities to include open-source, on-site or cloud-based databases such as MySQL, MariaDB, PostgreSQL, Enterprise DB Postgres Advanced Server, Amazon RDS, Amazon Aurora, and Microsoft Azure.

Enterprise technical support

Provides award-winning technical support as well as self-help tools to enable you to solve problems quickly and independently, 24 hours a day, 365 days a year.

Object and user management

Enables easy management and editing of database objects and management of user privileges.

SQL worksheet

Provides an environment for writing complex SQL code using a worksheet with content assist for faster, more streamlined development.

SQL query monitor

Displays currently running queries in real time and lets you copy the log or export the executed SQL script to a file for significant time savings.

Import or export data

Quickly imports data to tables from SQL files, CSV files or ZIP archives. Easily exports data from tables and allows you to set options such as destination, format, range of exported data and more.

Schema compare and sync

Compares and synchronizes databases, generates change scripts for target and source databases, saves results and exports scripts to a SQL worksheet.

Database snapshot

Takes a snapshot of your database and compares and synchronizes it with the current state of an active database, or exports it to a file or SQL worksheet to reduce the risk of errors.

Advanced JSON editor

Streamlines editing of JSON scripts using an advanced editor to visualize script segments, navigate JSON scripts, or fix and discover errors.

ABOUT QUEST

Quest provides software solutions for the rapidly-changing world of enterprise IT. We help simplify the challenges caused by data explosion, cloud expansion, hybrid datacenters, security threats and regulatory requirements. Our portfolio includes solutions for database management, data protection, unified endpoint management, identity and access management and Microsoft platform management.