

# Enterprise Reporter for Exchange

Get valuable security insights into Exchange and Exchange Online

Now more than ever, email security is critical for organizations of all sizes. Information residing in mailboxes and public folders is sensitive and often becomes subject to compliance efforts and security breaches. Administrators need complete visibility into mailboxes, mailbox folders, public folders, permissions, mail-enabled users and distribution groups so they can stay ahead of potential security vulnerabilities, both on premises and in the cloud. On a daily basis, they must answer questions like the following:

- Who has access to which sensitive mailboxes and public folders?

- How have the configurations of my Exchange servers changed over time?
- Which mailboxes are being migrated and reside in a hybrid Exchange deployment?

Enterprise Reporter for Exchange delivers the visibility you need to understand who has access to what across your Exchange and Exchange Online environments. Predefined and customizable reports on mailboxes, mailbox folders, public folders, permissions, mail-enabled users and distribution groups help you keep your email systems secure, and prepare for internal and external audits.

## BENEFITS:

- Enhances security and compliance by delivering a view of permissions and configurations for both Exchange and Exchange Online
- Delivers automated discovery and reporting on the configuration of Exchange and Exchange Online
- Uncovers security vulnerabilities by discovering who has access to sensitive individual or shared mailboxes and public folders
- Honors departmental and business function boundaries by enabling various stakeholders to get exactly the reports they need and nothing more
- Is scalable, secure and customizable to support large and complex Exchange and Exchange Online environments

**Mailbox Permissions**  
Shows the mailbox permissions for the selected servers.

Organization: 2016NewOrg (2016NewEX.dev.hal.ca.qstf) Last Collected: 13-Jul-2017 10:08 PM  
Server: EX-SRV2 (2016NewEX.dev.hal.ca.qstf)

Mailbox Name: 2016MB1 Mailbox Email: 2016MB1@2016newex.dev.hal.ca.qstf

Account	Permissions	Permission Type	Applies To	Inherited
2016NEWEX\2016MB10	Send As	Active Directory	This object and all descendants	<input type="checkbox"/>
2016NEWEX\Account Operators	Full Control	Active Directory	This object only	<input type="checkbox"/>
2016NEWEX\Administrators	Delete, Read Control, Write DACL, Write Owner, Create Child, List Children, All Validated Writes, Read Property, Write Property, List Object, All Extended Rights	Active Directory	This object and all descendants	<input checked="" type="checkbox"/>
2016NEWEX\Cert Publishers	Read Property, Write Property userCertificate	Active Directory	This object only	<input type="checkbox"/>
2016NEWEX\Delegated Setup	Read Property Account Restrictions	Active Directory	This object and all descendants	<input checked="" type="checkbox"/>
2016NEWEX\Domain Admins	Full Control	Active Directory	This object only	<input type="checkbox"/>
2016NEWEX\Enterprise Admins	Full Control	Active Directory	This object and all descendants	<input checked="" type="checkbox"/>
2016NEWEX\Exchange Servers	Write Property msExchLMPinChecksum	Active Directory	This object and all descendants	<input checked="" type="checkbox"/>
2016NEWEX\Exchange Servers	Read Property Exchange Personal Information	Active Directory	This object and all descendants	<input checked="" type="checkbox"/>
2016NEWEX\Exchange Servers	Write Property groupType	Active Directory	This object and all descendants	<input checked="" type="checkbox"/>

Figure 1: Enterprise Reporter shows you who has access to sensitive individual or shared mailboxes and public folders.

## SYSTEM REQUIREMENTS

For a complete list of system requirements and available reports, see the [Release Notes](#).

### BUILT-IN REPORTS BY CATEGORY

#### Exchange:

Organization Overview

#### Exchange Distribution Groups:

Distribution Groups and Members

#### Exchange Mailboxes:

Mailbox Delegates

#### Exchange Permissions:

Mailbox Permissions  
Mailbox Folder Permissions  
Public Folder Permissions

#### Exchange Public Folders:

Public Folder Details

#### Exchange Servers:

Exchange Server Details

#### Exchange Users and Contacts:

Mail-Contacts

#### Exchange Online Summary Groups:

Mail Enabled Groups and Members

#### Exchange Online Mailboxes and Public Folders:

Mailbox Size Information  
Public Folder Information

#### Exchange Online Permissions:

Mailbox Permissions  
Mailbox Permissions for Identity

#### Hybrid:

Exchange Hybrid for Migrated Mailboxes

## FEATURES

- **Hybrid environment visibility into access and permissions** — Gain visibility both on premises and in the cloud with a unified view of permissions and configurations across your Exchange and Exchange Online environments.
- **In-depth reporting** — Get the insight you need with comprehensive reporting, including complete reports on delegated rights based on the permissions status of mailboxes, public folders, users and contacts.
- **Scalable data collection** — Scale to Exchange and Exchange Online environments of any size and location. Schedule collections during off-peak hours to minimize the impact on network and server performance, and leverage the distributed collection architecture for load balancing.
- **Automated reporting workflows** — Ensure stakeholders get the reports they need, when they need them, with automated report generation and flexible delivery schedules.
- **Separation of duties (SoD)** — Honor departmental and business function boundaries by enabling auditors, help

desk staff, IT managers and other stakeholders to get exactly the reports they need and nothing more.

- **Customizable reports** — Perform efficient, effective data analysis and satisfy the unique information needs of your organization using predefined reports or by creating new reports with even more attributes. Customize any report with advanced filtering, and choose from multiple formats, including PDF, HTML, MHT, RTF, XLS, XLSX, CSV, text and images.
- **Common reporting portal** — Export reports to our software knowledge portal for a unified reporting interface across the entire family of Quest security and compliance solutions.

## ABOUT QUEST

Quest provides software solutions for the rapidly-changing world of enterprise IT. We help simplify the challenges caused by data explosion, cloud expansion, hybrid datacenters, security threats and regulatory requirements. Our portfolio includes solutions for database management, data protection, unified endpoint management, identity and access management and Microsoft platform management.

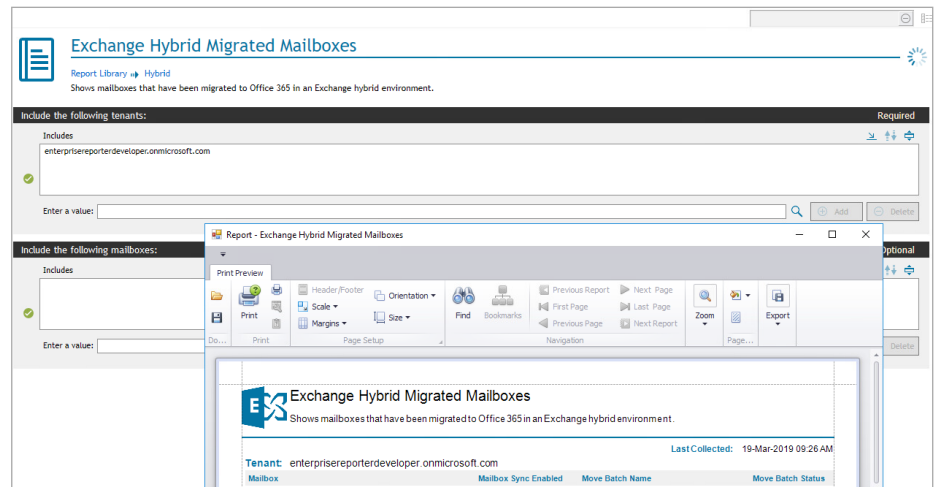


Figure 2: Easily see where mailboxes reside in hybrid Exchange environments..